

governance

and organizational structure

MEETING OF FOUNDING MEMBERS

46 founders appointed on 12/2/2004:
 • 34 agencies in 25 countries
 • 12 individuals

COMMITTEE OF PARTNERS

143 members appointed on 12/2/2004:
 • 140 individuals
 • 3 agencies

BOARD OF DIRECTORS

Appointed on 06/30/2017 in post until 06/30/2021
 President: **Patrizia Savi**
 Vice-President: **Alfredo Mantica**
 Members: **Daniele Contini, Michele Faldi, Lorenzo Ornaghi, Giampaolo Silvestri, Alda Maria Vanoni**

PRESIDENT

Patrizia Savi

VICE-PRESIDENT

Alfredo Mantica

SECRETARY GENERAL

Giampaolo Silvestri

BOARD OF AUDITORS

Appointed on 06/30/2017 in post until 06/30/2021
 President: **Michele Grampa**
 Members: **Delia Gatti, Alfredo Tradati**

SUPERVISORY BOARD

Established on 04/30/2013, renewed on 05/20/2019 and in post until 05/19/2023
Benedetta Colombo (President), **Giorgio Brandazza**

Decentralized organizational structure divided into regions that are in constant communication with HQ departments in order to:

- guarantee widespread action
- maintain a uniform strategic and operational vision, safeguarding local special characteristics.

THEMATIC FOCAL POINTS

Cross-sector reference points for principal activity sectors:

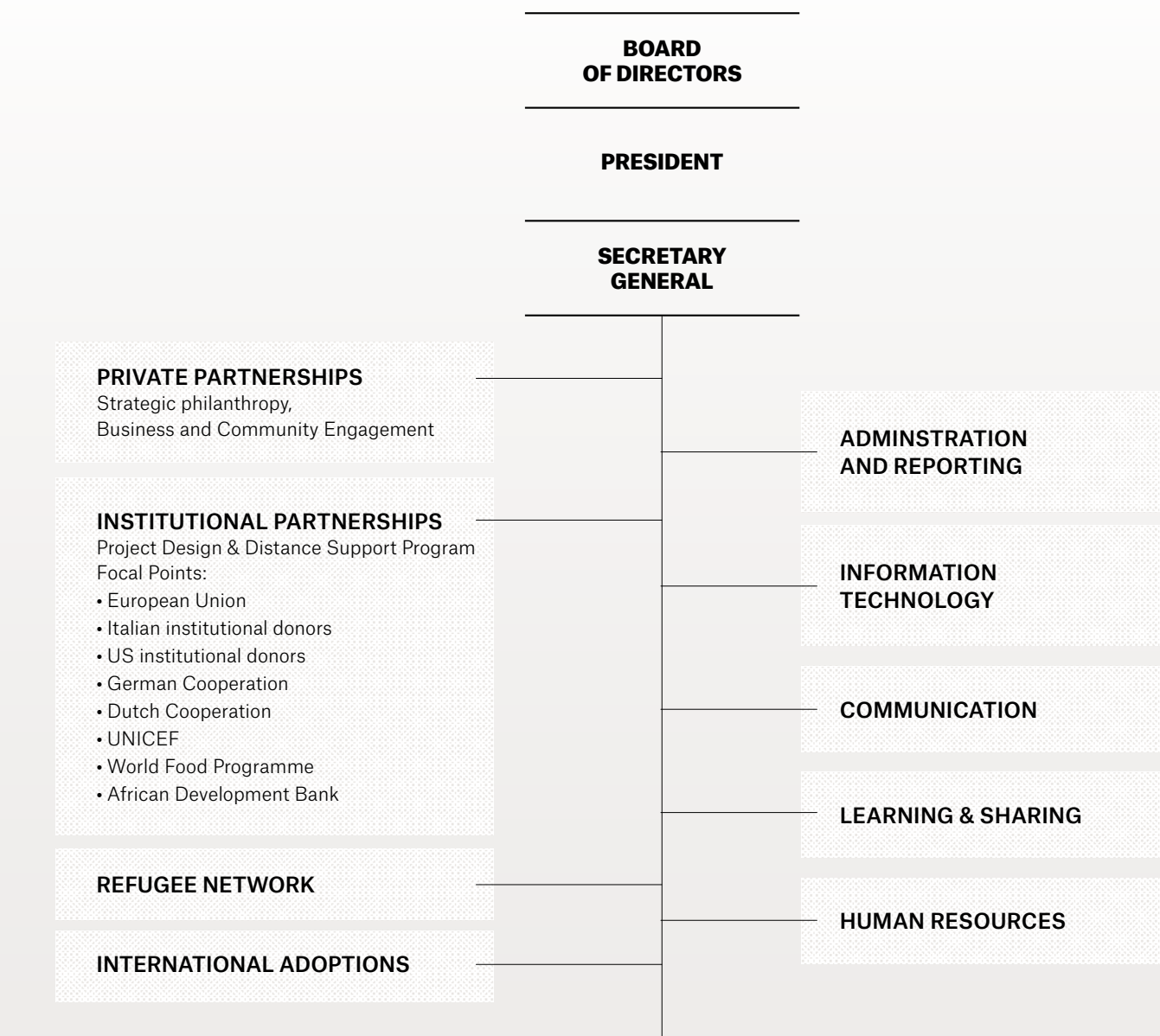
- Education
- Education in emergency
- Child protection
- Human capital and job creation
- Graduation approach
- Sustainable cities
- Humanitarian aid
- Nutrition
- Relationships with businesses
- Social entrepreneurship and innovative finance
- Access to energy
- Climate change
- Low-emission cooking systems
- Agriculture
- Migration and integration

HEADQUARTERS

Department supporting staff in the field.

DECENTRALIZED STRUCTURE

Regional managers report directly to the secretary general. Country representatives report to the relevant regional manager, except for Myanmar, Palestine and Albania, where the country representative reports to a desk officer in Italy.



DESKS	EASTERN AND SOUTHERN AFRICA REGION	WESTERN AND CENTRAL AFRICA REGION	UGANDA REGION	MIDDLE EAST AND NORTH AMERICA REGION	CARIBBEAN REGION	LATIN AMERICA REGION
Myanmar	Burundi	Cameroon	Uganda	Lebanon	Haiti	Ecuador
Palestine	Kenya	Ivory Coast		Jordan	Dominican Republic	Mexico
Albania	Mozambique	Republic of the Congo		Iraq		Peru
	DR Congo	Sierra Leone		Syria		Brazil
	Rwanda			Tunisia/Libya		
	Somalia					
	South Sudan					